

Long-Term Storage (After Your Trip Is Over)

Disinfect your microfilter before storage to prevent microbiological growth within the pump.

- 1) Fill a liter container with tap water and add 2 tablets of Micropur Forte (if not available use 2 tablespoons of ordinary household bleach).
- 2) Place prefilter into solution.
- 3) Pump entire amount of solution through unit (into sink or container).
- 4) Remove prefilter from the solution and continue pumping another 5 to 10 strokes to remove remaining water from the pump body and hoses.
- 5) Remove cartridge and allow to dry.
- 6) Wrap hoses around body and store in carry bag.

Note: When removing unit from long-term storage, flush the system with one liter of water to remove any stale tasting water.

Cartridge Capacity

Cartridge capacity depends on water quality. The Katadyn Hiker was tested at 750 liters and found effective for removal of bacteria (*Klebsiella terrigena*) and protozoan cysts (*Giardia* and *Cryptosporidium*). For maximum performance, cartridge should be replaced after 750 liters or when the unit becomes hard to pump.

Cartridge Installation

Replacement cartridges are available from the dealer where you purchased your Katadyn Hiker.

- 1) Remove output hose from cartridge output barb. Grasp the top of the Hiker cartridge and turn counter clockwise. If cartridge removal is not possible by hand, the handle shaft will function as a cartridge removal tool: Remove the handle collar and handle. Locate one of the deep grooves on either side of the handle shaft. Lay the handle across the filter top and insert two of the "fins" on top of the filter into one of the grooves of the handle shaft. Hold the handle shaft in place firmly with the palm of your hand. Using the handle shaft for leverage, apply even pressure and gradually turn the cartridge counter clockwise. Use caution so that handle shaft does not slip and cause damage. Discard used cartridge in trash receptacle.
- 2) Rinse inside of Hiker housing by swishing with clear water (non-filtered water is ok). Discard water. Wipe inside of housing and housing threads with soft cloth to remove sediment.
- 3) Remove new cartridge from packaging.
- 4) Insert new cartridge into housing and tighten clockwise. Note - Apply silicone lubricant to cartridge o-ring before re-assembly to ease cartridge removal in the future.
- 5) Re-attach output hose to cartridge output barb. (Figure 1-1)
- 6) Flush cartridge by pumping and discarding the first liter.

(5)

When You Travel Abroad, Camp or Backpack...

...you run a risk of illness ranging from the inconvenience and discomfort of diarrhea to more serious illnesses caused by protozoan cysts (i.e., *Giardia*, *Cryptosporidium*), viruses and bacteria.

The microorganisms that cause these diseases are often found in the food and water you consume. Lakes, streams and the local water supply may be contaminated.

To minimize the risk of contracting these illnesses, we suggest that you consult with your physician, state health department or travelers' clinic 4-6 weeks before you depart.

And while you are traveling...

- Make sure that prepared food is thoroughly cooked.
- Select non-cooked foods (fruits, nuts, etc.) that have intact shells or skins, and clean your hands before peeling the food.
- Wash your hands with soap and water thoroughly and often, especially before you eat. Filter all drinking water with your Katadyn Hiker Water Microfilter.

The Katadyn Hiker Microfilter is an essential piece of outdoor equipment. We hope it makes your outdoor experience more enjoyable. For questions or suggestions, please contact us at 1-800-755-6701.

(6)

Product Registration

Please take a moment to register your new Katadyn product by completing the short product registration form online at www.katadyn.com/productregistration. The information you provide will enable us to better serve you with products developed to meet your needs and interests. Register your Katadyn product online and you will be automatically entered into a drawing to win a free Katadyn product.

Limited Warranty

Your Katadyn Hiker Microfilter is warranted for one (1) year from the date of purchase against defects in materials and workmanship. Should your Katadyn Hiker prove defective within one year from the date of purchase, return it to the Katadyn retailer from whom it was purchased. If you do not receive a satisfactory resolution, contact Katadyn Consumer Relations at 1-800-755-6701 for service assistance. Katadyn, at its discretion, will replace or repair the damaged item. Please retain your purchase receipt as proof of date purchased. This warranty gives you specific legal rights and you may have other legal rights which vary from state to state.

Contact North America:

Katadyn North America Inc.
6325 Sandburg Road
Minneapolis, MN 55427 / USA
1-800-755-6701
outdoor@katadyn.com / www.katadyn.com

Contact International:

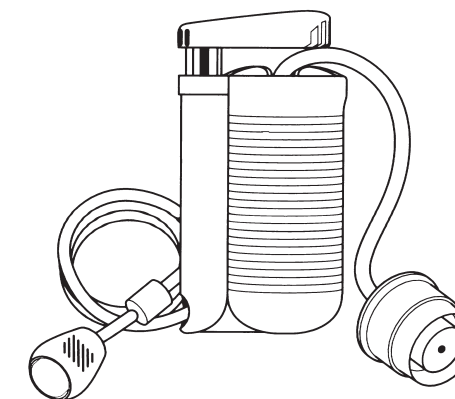
Katadyn Products Inc.
Birkenweg 4
8304 Wallisellen / Switzerland
info@katadyn.ch / www.katadyn.ch

Print No. 8013798/4

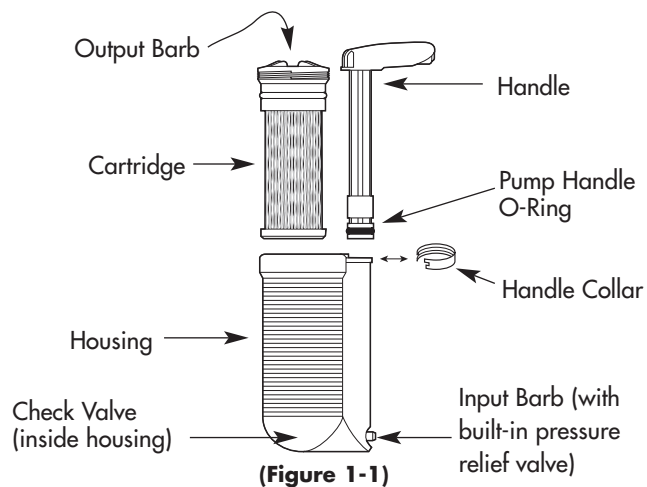
KATADYN®
MAKING WATER DRINKING WATER

Hiker Water Microfilter
(Model #8013629 or 8014531)

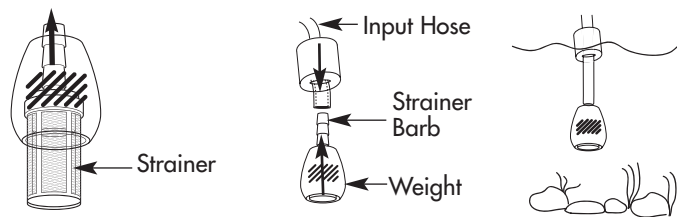
Hiker Replacement Cartridge
(Model #8013630 or #8014644)



Thank you for choosing a Katadyn portable water microfiltration system. The Katadyn Hiker Microfilter meets industry standards for reduction of bacteria (99.9999% *Klebsiella terrigena*) and protozoan cysts (99.9% *Giardia* and *Cryptosporidium*). Its compact and lightweight design is easy to use and essential equipment for camping, backpacking and trekking.



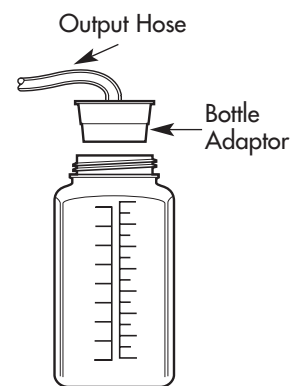
(Figure 1-1)



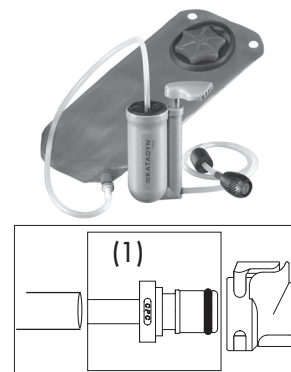
(Figure 1-2)

(1)

Key Components



(Figure 2-1)



(Figure 2-2)

Prefilter

The modular prefilter (Figure 1-2) is effective in still and running water. It consists of two components: a strainer and a weight.
 Note: Apply a small amount of silicone lubricant to the strainer barb to ease assembly.
 The prefilter is important because it prevents large particles (larger than 130 microns) from entering the water system. See Field Performance Tips for helpful hints.

EasyFill™ Bottle Adaptor

The EasyFill Bottle Adaptor (Figure 2-1) conveniently attaches directly to different sized water containers.

Hydration Bladder Compatible

Your Katadyn Hiker includes a connector (1) that allows the output hose to attach to the quick connect fitting built-in to many hydration bladders such as Nalgene, Jansport, etc. This convenient feature allows easy filling of hydration bladders. See illustration (Figure 2-2) for installation.

(2)

Product Set-up

The Hiker requires minimal set up. For best results, try out the Hiker before first field use to familiarize yourself with its operation.

1) Connect Hoses

Remove the plastic caps from the input and output barbs; retain for storage. Connect input hose (hose with prefilter) to input barb at base of pump housing. Connect output hose to output barb on top of cartridge. Connect the EasyFill Bottle Adaptor to the end of the output hose. (Figures 1-1, 1-2, 2-1) For use with hydration bladder, connect hydration connector to the end of the output hose. (Figure 2-2)

2) Flush System

Important: Before first use, flush system by pumping approximately 1 liter of water through the unit to remove harmless carbon dust. Slightly discolored water is normal when flushing. See following section on Normal Operation on how to filter water.

Normal Operation

- 1) Place input hose in untreated water source. Adjust the float to keep prefilter off the bottom and away from sediment.
- 2) Insert the EasyFill Bottle Adaptor into a clean water container or connect hydration connector to bladder*. (Figure 2-1, 2-2)
- 3) Make sure the hoses are not kinked. Begin pumping the handle in a slow, steady manner. Approximately 48 strokes per minute equals 1 liter of water.
- 4) After filling water container with filtered water, remove bottle adaptor/hydration connector from container/bladder and prefilter from water source. Continue pumping to remove remaining water from pump body.
- 5) Store unit in the carry bag. To prevent the possibility of cross contamination, remove the output hose and EasyFill Bottle Adaptor and store separately in the re-sealable bag inside the carry bag.

*Note: Before each use, flush and discard a small amount (5 – 10 strokes) of water to remove stale taste.

(3)

Field Performance Tips

The Katadyn Hiker is designed to remove bacteria and protozoan cysts such as *Giardia* and *Cryptosporidium*. To extend cartridge life, always use the best water source available. Keep the intake prefilter clean and off the bottom.

In heavy sediment conditions, wrap a coffee filter or bandanna around the intake prefilter. Where possible, place untreated water in container and wait for sediment to settle out until water appears clear - then filter from water above the sediment.

Maintain your Katadyn water system to keep it operating smoothly.

1) If handle is hard to push:

Lubricate pump handle o-ring. Silicone lubricant is provided with your new unit. Remove handle collar and handle. (Figure 1-1) Clean excess build-up from black rubber o-ring on bottom of handle. Place a small amount of silicone lubricant all the way around the o-ring. Re-assemble.

Clogged cartridge. A clogged cartridge requires replacement. As a temporary solution in the field, remove the cartridge and swish it around in water. See Cartridge Installation for cartridge removal. Take care that untreated water does not contact the cartridge output barb. If flow is not restored, replace cartridge.

2) If unit pumps easily, but no water flow:

Make sure prefilter is submerged.

Make sure that hoses are not blocked or pinched.

Clean check valve. Occasionally, sediment may enter pump body and prevent check valve from operating properly. This may cause lack of water draw. The check valve can easily be cleaned to restore maximum water output. Remove the cartridge. Fill the pump housing half way with water, swirl around and discard water. Fill the housing half way with water again and reinstall cartridge. Pump slowly to get water started and resume normal pump rate when flow has begun.

3) Prefilter: Rinse the prefilter in water to remove any particles that may be caught in the strainer. For a more thorough cleaning, remove the prefilter from the input hose and clean with water and a soft brush. Reassemble. Apply a small amount of silicone lubricant to the strainer barb to ease assembly. (Figure 1-2)

For use without the weight. The prefilter is functional with or without the weight (we recommend using with the weight). To use without the weight, remove the strainer barb from the input hose. Re-assemble without the weight.

4) Storage: Your Katadyn water system comes with a carry bag for storage. To prevent the possibility of cross contamination, remove the output hose and EasyFill Bottle Adaptor and store separately in a re-sealable bag inside the carry bag.

(4)